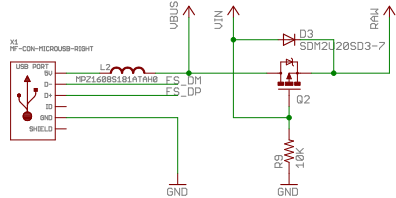
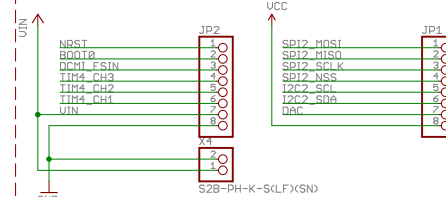


USB & POWER SUPPLY

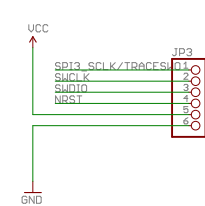


Notes:
The output voltage is calculated as below:
 $V_o = 0.6 \times (1 + R10/R5)$

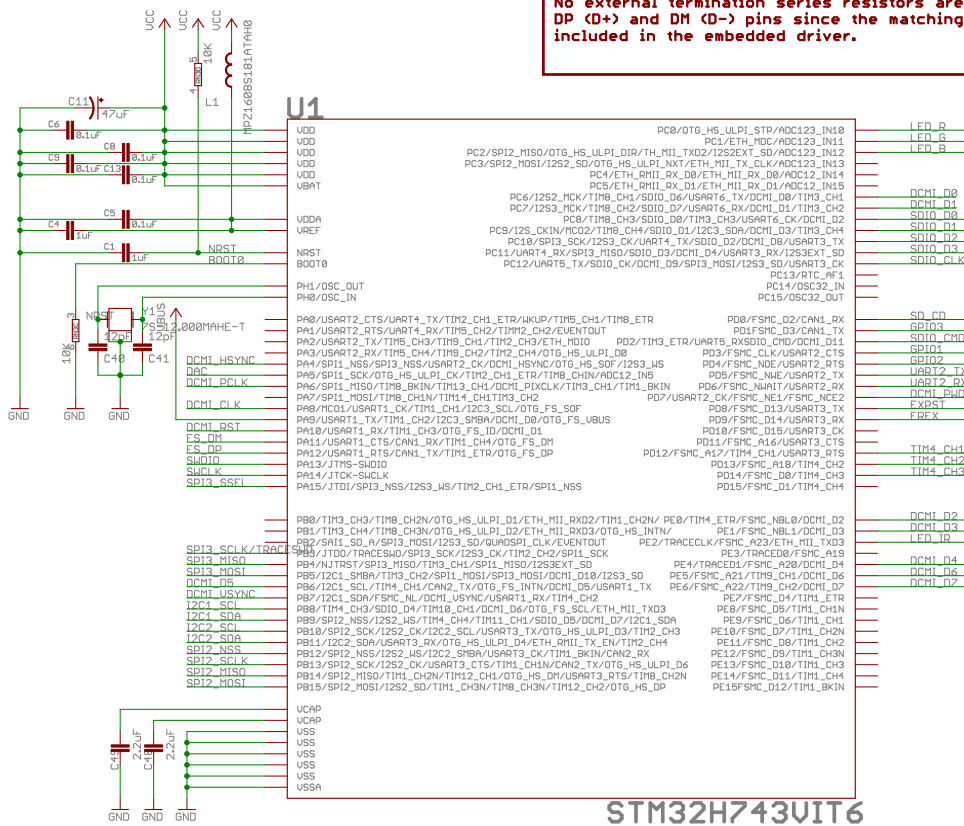
I/O HEADERS



DEBUG HEADER

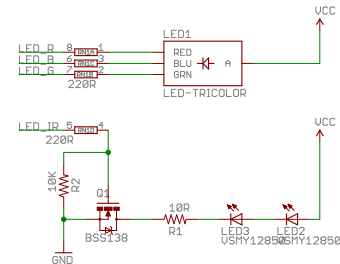


STM32F7xx MCU



Notes:
PC13, PC14, PC15 and PI8 limited to 3mA/2MHz
No external termination series resistors are required on DP (D+) and DM (D-) pins since the matching impedance is included in the embedded driver.

IR-RGB LEDs



SD CARD

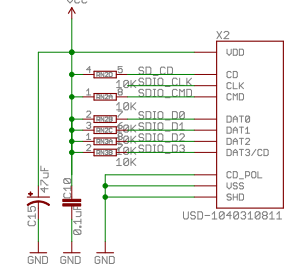
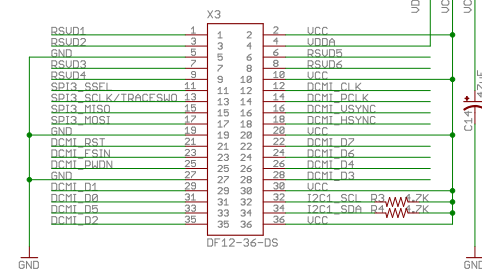



IMAGE SENSOR CONNECTOR



Notes:
Y19:Z1 for 8-bit YUUV or RGB (Y9 MSB, Y2 LSB)
DVDD not connected, using internal regulator

Copyright (c) 2013 Ibrahim Abd Elkader <i.abdalkader@gmail.com>
This work is licensed under the Creative Commons Attribution-ShareAlike 3.0 License.
To view a copy of this license, visit <http://creativecommons.org/licenses/by-sa/3.0/>


TITLE: base
Document Number: REV: 1
Date: 10/27/18 5:40 PM Sheet: 1/1