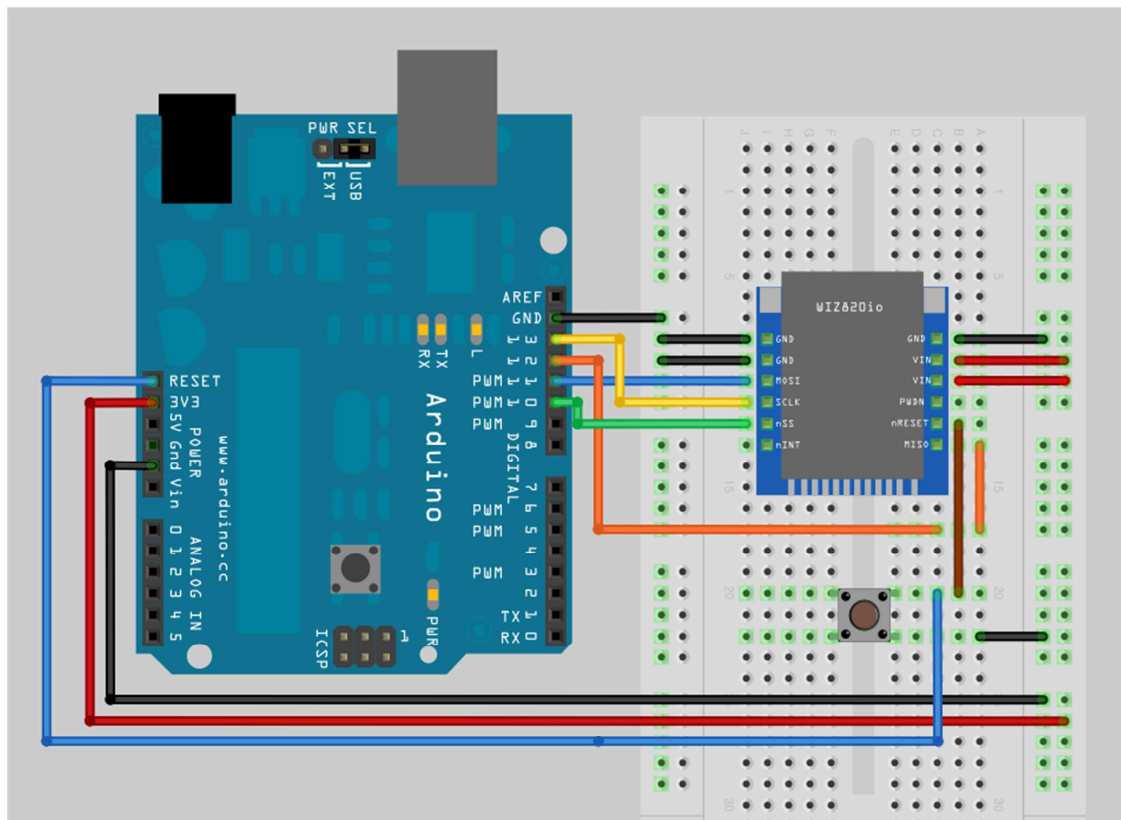


WIZ820io Usage Guideline for Arduino

WIZ820io provides easy and simple Ethernet connectivity to small platforms like Arduino. WIZnet's latest chip, W5200 is used in WIZ820io instead of W5100, which was previously used in the Arduino Ethernet Shield. To use WIZ820io with Arduino, users need to replace two files in the Arduino Ethernet library.

1. Hardware connection



* PWDN, nINT signals are not used.

2. Installing W5200 library

Download and overwrite new w5100.cpp & w5100.h onto the "/libraries/Ethernet/utility" folder in your Arduino IDE.

* These new files contain modified codes for W5200

3. Using the W5200 library and evaluate existing Ethernet example.

All other steps are the same as the steps from the Arduino Ethernet Shield.

In the Arduino IDE, go to Files->Examples->Ethernet, open any example, then compile and upload the file to the Arduino board.